

PAN NETWORK PVT. LTD.

A research based consulting organization

LIVING PRESENT CREATING TOMORROW

Guiding to Informed Decision



GUIDING TO INFORMED DECISIONS

PAN Network is a research based consulting organization. It specializes in Natural Resource Management, Geo sciences, Environmental Sciences and Livelihood issues. PAN has a strong team with specialized knowledge in Geographic Information System (GIS), Remote Sensing and Engineering Drawing.

By serving clients' needs and building strong client relationships, our people have made PAN network one of the most trusted sources of professional services in the country. We have earned our reputation through hard work, quality of our professionals and the success of our clients.

Conceptualized and promoted by highly acclaimed professionals and intellectuals, since its inception in the year 2000, PAN Network has created a unique culture with pride in ownership and a commitment to providing technically sound and cost-effective consulting services. We develop close working relationships with our clients to understand the specific complex environments in which they operate. PAN Network has experienced steady growth over the years.

PAN Network provides customized solutions based on detailed scientific study. Strong research background in executing various cutting edge projects awarded by domestic as well as international organizations, meeting critical deadlines of deliverables and achieving perfection in quality goals have paralleled the needs of our clients, as they operate in an ever-changing and complex global environment.

PAN is accredited by Consultancy Development Centre, an Institution under Ministry of Science & Technology, Govt. of India. PAN is also a partner of the Global Water Partnership, Sweden.



PAN NETWORK EXPERTISE SEGMENTS

NATURAL RESOURCE MANAGEMENT

- a. River rejuvenation and River Basin development.
- b. Soil & Water Conservation.
- c. Environmental Impact Assessment.
- d. Landuse & Landcover study.
- e. Geomorphological/ Geological/ Geohydrological study.
- f. Biodiversity Conservation.
- g. Vulnerability Analysis.

GIS & REMOTE SENSING SERVICES

- a. Creation of GIS database & Map Digitisation.
- b. Spatial Analysis.
- c. Remote Sensing data interpretation.
- d. GIS Modelling.
- e. GPS Survey.
- f. Total Station Survey.
- g. CAD Drawing.

SERVICES FOR THE PEOPLE

- a. Watershed Planning and Management.
- b. Micro & Macro level Rural Planning.
- c. Urban Planning.
- d. Spatial Decision Support System for business planning & marketing.
- e. Business Geographics & Market Research.

- f. Evaluation and Monitoring of developmental projects.

SOCIO-ECONOMIC STUDY

- a. Livelihood Analysis & Sustainable Development Strategies.
- b. Livelihood study and Alternative Livelihood Strategy.
- c. Training Need Assessment.
- d. Socio-Economic Survey.

CAPACITY BUILDING

- a. Training On GIS & MIS.
- b. Training On CAD Drawing.
- c. GPS Survey Training.
- d. Total Station Survey Training.

TECHNICAL SUPPORT FOR CSR ACTIVITIES



SERVICES

We provide various services related to Water Resource Management, Livelihood Studies, Development Planning and GIS remote sensing.



NATURAL RESOURCE MANAGEMENT

WATER RESOURCES

Water is a prerequisite for life. Scientific water management promotes economic and social progress, but poor water management hinders development and causes peoples' misery. Prosperity in many places stems from good water resource management. Water underpins almost all economic activity from food production, the mainstay of many economies and critical to people's livelihoods to manufacturing, energy production and transport.

Our expertise in developing and managing water resources has been tested and proven in a variety of environments. Our collective experience in integrated river basin management in challenging geo-hydrological settings helps to develop better water management practices. We help decision – makers select solutions that fit the needs of communities through several areas of supports, we model watershed areas through Geographic Information System (GIS), water budgeting and drainage network analysis. We also facilitate stakeholders' meetings as also assess environmental, social and economic impacts.



WATERSHED MANAGEMENT SUCCESS STORY

PAN practices ecosystem centric watershed management as the sustainable development model using scientific method by treating and developing natural surface and ground water sources. The goal is to create sustainable livelihood practices for the local society restoration of the local ecology. PAN team has successfully planned and implemented different watersheds in different parts of the country particularly drought prone areas of Jharkhand, Western Odisha, Rajasthan e.t.c.

Our technical team with Geographic Information System(GIS) and Remote Sensing expertise creates the digital watershed model, with the help of digital elevation model along with slopes for better understanding and study of the watershed area for watershed planning.

The plans subsequently then discussed at grass root level in stakeholder's meetings to assess environmental, social and economic impacts of the plans by the watershed community. Water security are the hallmark of PAN watersheds present in different parts of the country.

WATERSHED EVALUATION AND CHANGE DETECTION

PAN also provides excellent cost-effective solutions for watershed monitoring and management. Our environmental monitoring services are able to provide solutions at low cost to maximize profit and yield. We are able to provide our clients with accurate maps for environment risk analysis, biodiversity action planning and environmental and geological applications. We provide accurate maps and solutions for hydro-geological processes, fluvial processes, catchment and water dispersion analysis and flood risk analysis. PAN provided watershed evaluation and monitoring services organisations liked NABARD, etc.



STUDIES ON LAND & WATER RESOURCES

The sustainable management of land resources in urban and rural area throws enormous challenges to the society with a rapid growing population. Land based problems are multifaceted starting from soil erosion to land acquisition and resettlement & rehabilitation. Issues like land use planning and impact of land use change has a far reaching effect on the environment as a whole.

PAN has experienced professional Geologist, Geophysicist and Hydrologist to conduct various geological geophysical and hydrological studies. These studies lead to solutions related to natural resource management in various contexts like Engineering, Environmental and Social.



GIS & REMOTE SENSING SERVICES

GEOINFORMATICS & REMOTE SENSING SERVICES

PAN is having multidisciplinary team of professionals and experts with vast experience and technical knowledge in Geo sciences,& Geo-informatics Services. In its laboratory it has the required modern hardware and softwares. Team members regularly use the facilities for image interpretation,data collection and analysis. The team has the expertise in the application areas on Environmental Science, Hydrogeology, Geology, Soil Science, Photogrammetry, Surveying, Planning and economic & Business modelling. Our GIS and remote sensing experts with over 20 years of experience help to interpret images with highest accuracy and the work includes creation of GIS database & Map digitization,Satellite image interpretation, Spatial Analysis through GIS, Decision Support System, customization of GIS software, GPS/TS services for survey & mapping etc.

DIGITISATION & CAD DRAWINGS

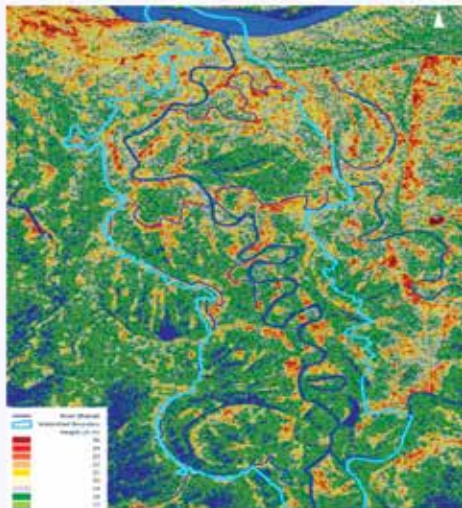
We have a strong team for digitisation & preparation of CAD Engineering drawing, contour mapping & traversing etc. We undertake all types of digitisation and Engineering drawing preparation.

REMOTE SENSING SERVICES

PAN professionals regularly interpret commercially available remote sensing satellite data into quality raster data products.This involves georectification, orthorectification, removing distortions in the images and accurate interpretation ensuring high quality output.PAN is able to produce a seamless raster data products from multiple image tiles.

PAN's remote sensing services include:

- Land use Land Cover Mapping, Environmental Applications,
- Drainage morphology data, Vector updates,
- High Resolution Urban Mapping,
- Agricultural Crop Acreage Estimation and NDVI based Crop Yield Estimation
- EVI based Forest Density Mapping and species level forest mapping,
- Hydro geomorphological mapping,
- Image based Soil Mapping,
- DEM extraction from Interferometric Radarsat Images,
- Feature Extraction and Digital Terrain and Surface modelling,



CUSTOMISATION OF GIS BASED DECISION SUPPORT TOOLS

GIS data enhances user productivity considerably as a decision support tool. PAN provides customized software solutions with embedded GIS data.



SURVEY

PAN team conducts study of the various types of surveys such as geological, topological, cross section survey, contour survey etc. on regular basis. Various types of maps are prepared based on scientific study such as Geological map, Soil map, Land capacity map etc. through field survey as also with the help of available secondary data.

We have successfully completed many projects in the field of Land and Water Resource Management and contributed our best to the reputed organisations, domestic and international. Our areas of expertise include :

Geomorphological/ Geological/ Geohydrological Survey

Study includes interpretation of surface land form, geological formation and hydrological parameters based on which the topography, soil mechanics, slope factor analysis, aggradational and degradational facies and development activities for planning process.

GPS and Total station survey

The survey includes identification of land with proper geographic administration, including land coordinates. The study also includes the location, altitude in respect of mean sea level.

Socio-economic survey

The survey includes tailor-made sample/ household survey as per clients' requirements, with structured questionnaire.

SERVICES FOR THE PEOPLE

DEVELOPMENT-PLANNING

Over the years PAN has developed vast expertise in areas of Urban planning, Land use Planning, Environment Planning, Micro and macro level rural and urban planning, spatial decision support system development for business planning and marketing etc. with the help of digital modeling technique.



MICRO PLANNING

PAN provides planning support to various local government bodies like urban local bodies /corporations / municipalities/village bodies or gram panchayats, funding institutions for planning related to infrastructure , capacity building of the institutions and stakeholder's capacity building.

A number of development plans prepared by PAN for different urban local bodies

(municipalities) including preparation of urban GIS database for all inclusive development were well appreciated.

PARTICIPATORY PLANNING

PAN felt the need of proper tool for planning at grass root level. It has user-friendly technology for rural stakeholders. This mobile based planning and survey tool helps stakeholders to participate in the development planning in a more meaningful way. It also provides the necessary documentation required at grass root level.

BUSINESS GEOGRAPHIC & MARKET RESERCH

Through Business Geographics, PAN provides a buisness decision support system that generates information on market, consumers, topography, network linkage, physical distribution etc in a spatial form to be used for strategic buisness planning.

Our experts co-relate spatial data with attribute data for analysis on buisness parameters and represent them on digitized map in a thematic graphical form. This helps managers to run queries, develop thematic buisness /market maps and run buisness simulations for better decision making.

We provide strategic buisness consultancy based on tools to enable our clients to enhance their topline and bottomline growth.

PAN's buisness geography services ensure that all the spatial data like market, infrastructure, population, potential target, agriculture, industry, trade, power, education, health etc are avaiable in spatial form either at macro or micro level (all India, states, districts, towns, cities and further zooming in as required). The clients can actually run queries to corelate various parameters, compare across geographies and do long range forecasts and plans. Clients' own brand, product, category sales and marketing data can be superimposed spatially and also compared and construsted with national/ global geo demographic surrogates.



CEO, COO, business heads, heads of marketing, heads of sales, regional sales managers, logistic and distribution heads and their team members can get immense benefits from PAN's strategic consultant based on business geographic tools. This practically covers all the industries but is particularly suitable for extensive distribution sectors like FMCG, auto & ancillary, consumer durables, pharma, banking and financial services, telecom, core sectors like cement, fertilizer, aluminium, iron & steel, textile etc.

- Sales targeting and planning.
- Market mapping.
- Long term potential estimates.
- Micro focus on main cities of consumption.
- Route map and retail planning.
- Telecom network planning.
- Category potential index mapping.
- Sales personnel route plan.
- Logistics planning
- Distribution route optimization.



Business geographic solutions are desktop based requiring no additional hardware and involves very little software costs.

PAN's business geographic services solutions are appreciated and regularly used in fertilizer industry, micro credit institutions, banking industry and retail business.

SOCIO ECONOMIC STUDY

Socio-economic study encompasses livelihood analysis & sustainable development, studies on different livelihood issues, training need assessment, training on manpower development.

LIVELIHOOD ANALYSIS & SUSTAINABLE DEVELOPMENT

The biggest challenge of our country is sustainable rural development. Large number of people are associated with primary sector economy like agriculture, forestry, animal husbandry, fisheries etc. PAN provides livelihood support to large number of people maintaining the ecological balance which is a challenging issue involving people in the policy-making process in a democratic manner.

Our experts with their vast experience working in rural areas understand the physical resources as well as the human need for providing solutions at village level in a participatory manner.



Our multidisciplinary team of professionals and experts with profound technical knowledge and experience in the fields of Geomorphology, Hydrogeology, Agronomy, Geology, Soil-Science etc. provide necessary solutions after detailed study of the watershed area. Our team provides valuable support to the implementing organizations in term of technical study, project monitoring and capacity building.

Our experts are well aware of the various facets of integrated water resources management & accordingly provide customized solutions based on local conditions.

AGRICULTURE

Population growth, climate change and the needs of the country have placed increasing demands on agricultural development. Assessment of the agricultural practices with respect to the local agro ecological conditions is very important for further agricultural growth.



Our professionals and researchers leverage their wide experience in diverse geographic locations to deliver a wide range of services, from crop estimation with the help of satellite images to environmental, hydrogeological and site conditions study for agriculture.

SOCIO ECONOMIC SURVEY

The survey is conducted in order to obtain information about social behaviour, trends of peoples' economic conditions and the trend in the area of study. The objective of the survey is to know the opinion, demands and problems of people. It also records the peoples' level of satisfaction and perception of improvement in relation to plan or programme which is to be implemented. For planning purposes of any existing area, socio economic survey is of utmost importance, because it is only the direct way to come in contact with the residents and to get the people's reaction and acceptability of some already worked out proposals/plans.

CAPACITY BUILDING

CAPACITY BUILDING OF PEOPLE'S INSTITUTION

The success of any development programme depends on the level of people's participation. Participation means people's involvement in identifying, planning and implementing the programme in a meaningful way. Such participation is possible through continuous capacity building processes such as training, handholding and mentoring based on their level of requirement and capability.

Our specialists assess the capacity building requirement and customize the training and other capacity building methods at various levels for the institution.



TRAINING

PAN provides hands-on training on GIS software to the officials of Royal Govt. of Bhutan & Ramkrishna Mission Loka Shiksha Parishad, CCBP, SUDA, Government of West Bengal & Jharkhand. PAN has imparted training of application of GIS & Remote Sensing to NABARD for watershed development. PAN imparted training on SOP (Standard Operating Procedure) to the councillors & personnel of Titagarh Municipality.

PAN imparted INRM (Integrated Natural resource Management) training for BDOs, & BPOs of Jharkhand Govt.



CORPORATE SOCIAL RESPONSIBILITY

Corporate Houses are integral part of nature and society. CSR is the concept which not only considers the profitability of any Business House, but also takes care of the interest of the society and environment. CSR is broadly two fold –

- i) Steps taken by the industry to neutralize or offset the harmful effect caused by its processes.
- ii) Further steps by the industry for benefit of the people and environment.

PAN provide services in following CSR activities :

- Advocacy – Awareness programmes on environment related issues
- Training Need Assessment
- Imparting vocational training
- Natural resource management
- Organising potable water in surrounding areas

Benefits of Corporate Social responsibility :

- Sensitize on good "Corporate Citizenship" practices
- Facilitates "Inclusive and Sustainable Growth" of the industry
- Helps in "Risk Management"
- Develops "Brand Image"
- Helps long time survival



IMPORTANT PROJECTS

1 . Nippon Koei Co. Ltd.

Providing services for survey on use of natural resources in West Bengal under Preparatory survey of the project for forest and biodiversity conservation for climate resilience enhancement in West Bengal ,India.

2 . Govt. of West Bengal

a. Geo-hydrological study and preparation of River Rejuvenation plan for Bhairab River Murshidabad District.

b. Geo-hydrological study and preparation of River Rejuvenation plan for Kulik River Uttar Dinajpur District.

3 . Tata Consulting Engineers Ltd.

Study on land use, hydrology and hydro-geology in the Tata Steel SEZ area in Gopalpur, Behrampur block, Conjam district, Odisa.

4 . Royal Govt. of Bhutan

Training given on particular GIS software to officials of Royal Govt. of Bhutan.

5 . Energo Engineering Projects: LTd.

GIS database creation for IGEA project at Ujjain Municipal Corporation, Madhya Pradesh.

6 . Paul Hamlyn Foundation

a. Provide support to Savera Foundation for Water conservation planning and implementation in 10 villages of Thansinghdih Panchayat, Tisri block, District Giridih, Jharkhand.

b. Provide support to Chale Chalo for water conservation planning and implementation in 9 villages of two Gram Panchayats in Sinapali block, Nuapada Block, Odisha.

7 . Krishi Gram Vikas Kendra (Usha Martin Group Rural Dev. Initiative)

An India Canada Environment Facility (ICEF) funded project. Detailed study and planning on water resources conservation and conjunctive utilisation for environmental restoration in tribal area of Patratu Block, Hazaribagh district Jharkhand.

8 . NTPC Limited

Geo-hydrological and geomorphologic study of sub-watershed area for the preparation of Detailed Project Report for supply of drinking water to selected mining resettlement and rehabilitation villages of Jharkhand, India.

9 . TATA Iron & Steel Company

Study and measurement of soil erosion around Jamshedpur steel city area using RUSLE method.

10. TATA Steel Rural Development Society

NRM study of different watersheds for Integrated Rural Development Projects in

different Blocks of the Jharkhand. This includes detailed hydrological study for watershed development planning in the draught prone sector of the rural areas, involving villagers in the planning process.

11. Damador Valley Corporation

Geo-hydrological, Geo-morphological and socio-economic study of watersheds around Tilaya reservoir and preparation of Watershed Management Plan for soil and water conservation.

12. PRADAN

- (a) Development of a scientific Watershed Management plan with the help of the stake-holders in Tijara Block of Alwar District, Rajasthan with satellite data for the preparation of GIS model.
- (b) Scientific study of watershed area for Watershed Development Projects in different Blocks of the Bihar State and creation of GIS database on watersheds.
- (c) Scientific study and development of Watershed Management plan through GIS for proposed structural measures for poverty alleviation in the rural areas of Abu Road Block, Rajasthan.
- (d) District-wise mapping of wasteland through GIS for livelihood analysis of Chattishgarh, Jharkhand, Andhra Pradesh and MP.

13. Ramkrishna Mission Lokasiksha Parishad

Scientific study of natural resources including soil taxonomy and hydrological behaviour of certain part of Bankura District, West Bengal, for Joint Forest management. It led to creation of a comprehensive GIS database for project management.

14. Institute for Financial Management & Research

Calculation of mean NDVI (Normalized Difference Vegetation Index) for estimation of Crop Coverage for selected Villages of Chhatishgarh and Andhra Pradesh from satellite images for crop insurance.

15. Paharpur Cooling Towers

Determination of landuse characteristics with the help of satellite image and field study for Mini Township Project site at Joka, Kolkata.

16. World Bank

- (a) Preparation of GIS based digital data model for village level poverty mapping and assessment of poverty through small area estimation for the state of West Bengal, Bihar, Andhra Pradesh and Orissa and Accessibility index of villages were prepared.
- (b) Development of GIS based user-friendly web portal with thematic maps on various themes like education centres, road network, health centres, historical places etc. for National Statistical Bureau, Royal Government of Bhutan.
- (c). Updation of database on GIS platform for road network of Afganistan in order to analyse accessibility, community level service delivery and poverty.

17. London School of Economics

Preparation of village level GIS database of India for classification as per Development index.

Preparation of GIS data base for village level Poverty mapping through, Study of Small Area Estimates of selected welfare indicators for Uttaranchal with special reference to geomorphological and geo-hydrological study. The project was under World Food Programme- Executed jointly with India Development Foundation.

19. UNICEF

Preparation of GIS based thematic maps of AILA (Natural calamity) affected areas of Sunderbans, South 24-Parganas, West Bengal.

20. University of Calcutta

Landuse/ landcover mapping and spatial analysis of demography of East Calcutta Wetland.

21. Administrative Staff College of India

(a) Providing GIS support for preparation of Slum Free City Plan of Action of Guwahati Municipal Corporation under Rajiv Awas Yojana (RAY).

(b) Slum mapping in Guwahati Municipal are through GPS as a part of preparation of Slum Free City Plan of Action under Rajiv Awas Yojana (RAY).

22. Reserve Bank of India

GIS based analysis and report on flood of West Bengal. In this project the flood affected crop areas were demarcated and an analysis was made.

23. West Bengal School Service Commission

Creation of GIS based DSS for education incorporating all school database at village level for augmenting the district level education program and literacy drive.

24. Claritas India

Updation of road network of Greater Mumbai through Satellite Images and field visit. Number of ground survey was conducted and ward-wise important land marks were plotted on GIS platform.

25. A.C.Neilsen-ORG Marg

Retail outlet mapping on GIS platform in different metro cities.

26. Catholic Relief Services

Preparation of a workable model in GIS database and development of Decision Support System for entire India enabling CRS to plan and reorganize their various development programs with respect to their partner organizations.

27. Institute for Financial Management & Research

(a) Preparation of base maps, database and selected layers for Thanjavur and Tiruvarur districts of Tamil Nadu.

(b) Creation of GIS database for all districts of India, based on census data.

28. Arohan Financial Services

GIS based mapping of potential markets and different banks at block level for selected districts of West Bengal.

29. Disha group of Companies, Raipur

Development of GIS database for Election Commission of Chattisgarh State for restructuring of different constituencies.

30. Royal Government of Bhutan

Imparting training on Geographic Information System (GIS) to RGoB Executives.

31. TCIL Bell South

Training of senior developers on basis of project management.

32. Netaji Subhas Open University

Design, development and maintenance of Web Portal of the University, including development of e-Learning Management System.

33. GfK Mode Pvt.Ltd.

Preparation of GIS based interactive Decision Support Tool.

34. BASIX

Development of a Decision Support System for financial engineering of Regional Rural Banks (operating at District level). Operational areas of 194 Regional Rural Banks sponsored by 26 nationalised banks were marked with district wise demography for all the districts across the country. The financial data of the respective RRBs with merger facilities allows the decision maker to see the financial performance of RRBs in the backdrop of demography.

35. Ramkrishna Mission Lokasiksha Parishad

Development of an user-friendly bi-lingual (English and Bengali) participatory GIS software "Gram Vikash Parikalpana" for stakeholders' meaningful participation in Joint Forest Management Project for Micro level planning.

36. DFID

(a) Running Project Management Unit (PMU) under KUSP, Change Management Unit for Rajiv Awaas Yojana, a Government of India programme, jointly with Deloitte Touche Tohmatsu India Private Limited and Administrative Staff College of India, for preparation of slum free city development plan.

(b) Running Project Management Unit (PMU) under KUSP, Change Management Unit for Housing for All, a Government of India programme, jointly with ICF GHK International Company and Administrative Staff College of India, for preparation of municipal plan.

37. Municipal Affairs Department GoWB

Appraisal of Draft Development Plans prepared by different Municipalities.

38. Ministry of Textiles, Government of India

Study of the delivery system the handicraft artisans' livelihood in selected districts and generation of a comprehensive system for development of the same Sectoral, segmental and spatial analysis has been done after creation of a district-wise database on artisans' livelihood in the backdrop of their natural resources and market connectivity.

39. IL & FS

Preparation of a detailed plan for the bamboo based cluster development in Tripura for Tripura Bamboo Mission.

40. Jalpaiguri Municipality

Preparation of Development Plan for five years on Municipal Institutional Strengthening, including collection of various data, detailed socio-economic survey, development of landuse landcover map, conducting stakeholders meetings, situation analysis. The

planning incorporates infrastructure development plan, slum infrastructure, local economy, health, education and organisation development etc.

41. Cooch Behar Municipality

Preparation of Development Plan for five years on Municipal Institutional Strengthening, including collection of various data, detailed socio-economic survey, development of landuse landcover map, conducting stakeholders meetings, situation analysis. The planning incorporates infrastructure development plan, slum infrastructure, local economy, health, education and organisation development etc.

42. Titagarh Municipality

(a) Preparation of Development Plan for five years on Municipal Institutional Strengthening including collection of various data, detailed socio-economic survey, development of landuse landcover map, conducting stakeholders meetings, situation analysis. The planning incorporates infrastructure development plan, slum infrastructure, local economy, health, education and organization development etc.

(b) Detailed process & job study and Preparation of Organisational restructuring plan.

(c) Training imparted to the Councillors and selected Executives on Standard Operating Procedure (SOP) on effective Municipal Operation.

(d) Market potential survey for the articles produced by local SHGs and preparation of detailed action plan.

43. Haldia Municipality

Preparation of Development Plan for five years on Municipal Institutional Strengthening, including collection of various data, detailed socio-economic survey, development of landuse landcover map, conducting stakeholders meetings, situation analysis. The planning incorporates infrastructure development plan, slum infrastructure, local economy, health, education and organisation development etc.

44. Kalyani Municipality

Preparation of Development Plan for five years on Municipal Institutional Strengthening, including collection of various data, detailed socio-economic survey, development of landuse landcover map, conducting stakeholders meetings, situation analysis. The planning incorporates infrastructure development plan, slum infrastructure, local economy, health, education and organisation development etc.

45. National Bank for Agriculture & Rural Development (NABARD)

Monitoring and evaluation of Watershed and Wadi (Orchard) projects funded by NABARD with focused study on existing institutional system of the watersheds, its socio-economic impact on the watershed community, qualitative / quantitative assessment of various structures and land use measures etc.

46. Envirochek

Hydro-geological study in Torpa block, Jharkhand as a part of Environmental Impact Assessment for Integrated Steel Plant for L N Mittal Group.

Divine Vidyut

Detailed geological and socio-economic study and preparation of CSR report.

47. IDF

World Food Programme of United Nations project conducted by India Development foundation. Successfully generated GIS database for Small Area Estimation of Poverty for Uttaranchal. Village level analysis of poverty and Nutrition and identification of the areas with higher incidence of poverty and malnutrition for United Nations poverty eradication program.

OUR ACHIVEMRNTS

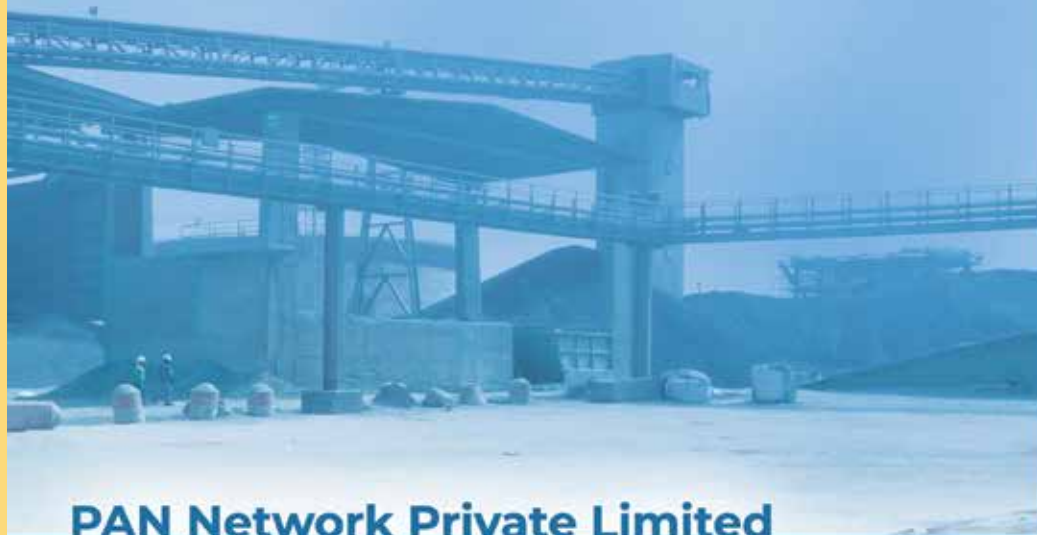




BLESSED WITH A LOT OF HAPPY CLIENTS



And many more



PAN Network Private Limited

PAN : AADCP0613Q CIN : 21-92474 OF 2000 Service Tax Registration
no : AADCP0613QST001 Chartered Accountant Firm : KGRS & CO, Kolkata
Date of Incorporation : 28th September, 2020
Bankers : ICICI Bank Limited, Ballygunj Br. / SBI, Dhakuriya Br.

Kolkata Office : 69-B, Rahim Ostagar Road, Kolkata 700045.
Phone: (91) (33) 24227934/ 7946, Fax: (91) (33) 24227934/ 7946



✉ : support@pannetwork.in
🌐 : www.pannetwork.in